

# Quick Start Guide

## AutoProPAD BASIC Key Programmer



### USER MANUAL

Please scan this QR code for the latest version

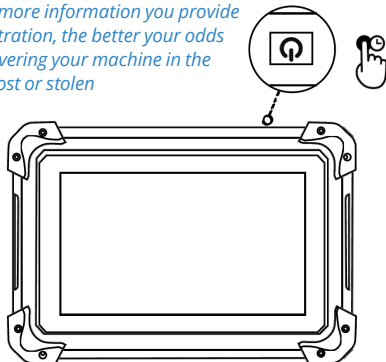


**IMPORTANT:** To prevent damage from occurring to the programmer and/or the vehicles upon which it is used, please acknowledge the precautions in this quick start guide, the user manual, and any prompts or warnings the programmer may present during operation. Always refer to and follow the safety messages and applicable test procedures provided by the vehicle manufacturer. Any intentional misuse or tampering of the machine will immediately void your warranty.

## Getting Started

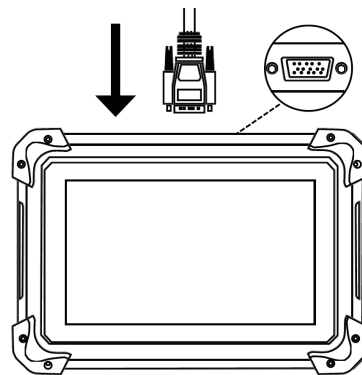
- Press and hold the power button for 3-5 seconds to turn on the tablet.
- Select your preferred language and begin the registration process
- Input the requested information and click "OK" to complete activation

*Note: The more information you provide upon registration, the better your odds are of recovering your machine in the event it is lost or stolen*

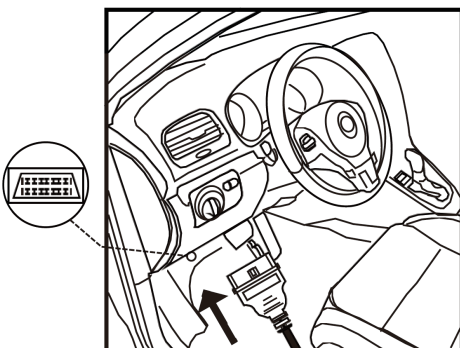


1

- Connect main data cable to the tablet and tighten thumb screws.
- Connect the other end of the main data cable to the OBD2 16 pin adapter.



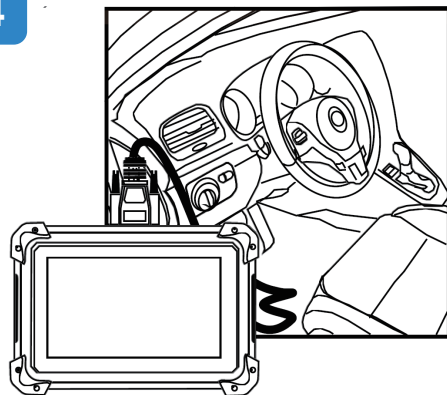
2



3

- Ensure the vehicle you are attempting to program is supported. Visit [autopropad.com/supported-vehicles](http://autopropad.com/supported-vehicles) for detailed information
- Plug the 16-pin male connector of the OBD2 adapter into the vehicle's OBD-II [port](#)

4



- Access key programming functions by vehicle year, make, and model, or by immobilizer type
- Follow the prompts on the screen as they appear

# Software Updates



**IMPORTANT:** Always ensure you have the latest machine updates by connecting your AutoProPAD to the internet regularly. Be sure to connect the programmer to external power before initiating any updates. Machines with active subscriptions will receive the latest immobilizer and diagnostic updates, as well as firmware updates for the AutoProPAD hardware. Machines that are out of subscription will only receive firmware updates for the AutoProPAD hardware.

- Once online, the main menu interface will display the total number of updates available
- Enter the [Updates](#) screen through the settings menu and a list of all available updates will be displayed
- Download software:
  - a) Click the “[Update All](#)” button to download all available updates
  - b) Click “[Update](#)” on the far right of each item to download individual software packages
- After the software is downloaded, it will automatically install and overwrite any previous versions, if available
- If the download is forcibly interrupted for any reason, the tablet will retain your download progress and continue from the point of interruption

## Language Preference



**IMPORTANT:** AutoProPAD BASIC natively supports 16 languages that will change both the language of the main user interface, and the instructional language during key programming. English is the default language pack pre-installed on each device. If the language is changed, the new language software pack will need to be downloaded and installed before the change can take effect.

- Locate the language selection option in the AutoProPAD main menu and select the language you desire
- Locate the updates page from the main menu, and download all available updates

## Contact US



[autopropad.com/tech-support](mailto:autopropad.com/tech-support)



[autopropad.com](http://autopropad.com)



5275 S. ARVILLE STREET, STE 328  
LAS VEGAS, NV 89118